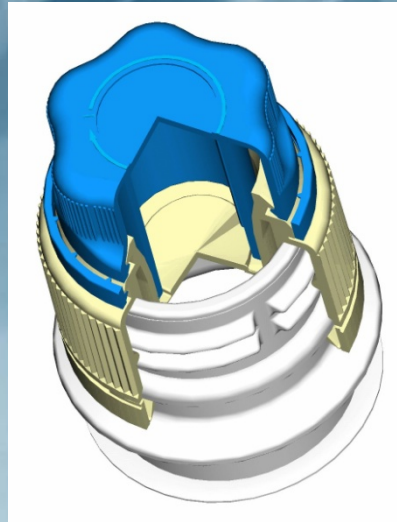
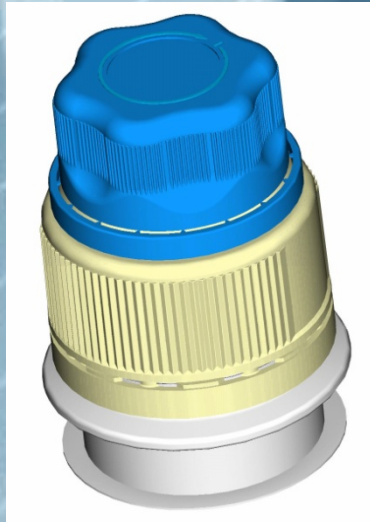


PowerCap Technology Brief

PowerCap Delivers Nutrients, Flavor, & Color To The Consumer At The Point Of Consumption

- Customer activated dispensing at point of use
- Adds flavor or nutrients with powder, liquid or tablet



Fusion Opportunities



This document contains renderings that are confidential and proprietary property of Liquid Health Labs, Inc. and Portola Packaging, Inc., and may not be published or disclosed to others, or used for any purpose other than review without the written authorization of an authorized officer of Liquid Health Labs, Inc. Portola Packaging, Inc.

Innovation

- Packaging

- InterACTION

- Fresh

- Fun

- Fortify

INTRODUCING!

Interactive cap that releases ingredients with a twist of the wrist.

1

Twist top cap clockwise once. Ingredients drop into beverage.

2

Shake bottle.

3

Turn bottom cap counter-clockwise once and enjoy!

Interactive Closure Technology


POWERCAP
nutrition with a twist



PowerCap Provides Distinct Technical & Marketing Advantages

- ***'Activates' any beverage***
- ***Extends shelf life*** & enhances efficacy by protecting ingredients from degrading in liquid
- ***Adds or Refreshes flavors***
- ***Reduces cost*** by eliminating need for production overages of active ingredients, flavors, & colors
- Provides consumers with assurance and confidence that the beverage is ***fortified by their action***
- ***Delivers a unique experience*** and “point of differentiation” from other beverage options
- Potential ***production cost savings*** – removes necessity of some hot fill applications
- ***Overcomes*** solubility and stability ***challenges*** of troublesome ingredients

Consumers See The Value Of PowerCap Innovation

- Positive Consumer Feedback
 - Interactive drinks are fun and cool for kids and adults
 - FRESH
 - Credibility of label claim
 - Athletes see convenience...need high efficacy
 - Value of getting nutrients and hydration at the same time...bonus
 - I have control on when and how much dosage I want
 - No preservatives
 - Liquid advantages over tablets, pills & chewables
 - Ingredients...the more the better
 - Higher level of confidence that 'something' of value is actually in the drink

Flavor Options

- Flavors:
- Lemonade (B vitamin complex & Teavigo Energy)
- Fruit Punch (daily multivitamin)
- Cran-Blueberry (antioxidant)
- Orange (energy)
- Orange (immunity)
- Cateloupe Lemon (B-complex & C- Energizing & immunizing)
- Pomegranate Cranberry Apple (B-complex & C - energizing & immunizing)
- ┌ Mojito (just flavor)

PowerCap Boosted Products Can Reach Consumers In A Variety Of Forms

1. Single units at point-of-sale



2. Fully integrated beverage with water, soda, tea, etc. with cap attached



3. Multi-pack for hanging on cold box or shelves



Functional Beverage Market Highlights

Market Data Supports The Current Strength & Potential Of Functional Beverages

Growth of non-dairy functional beverage market (source: Datamonitor)

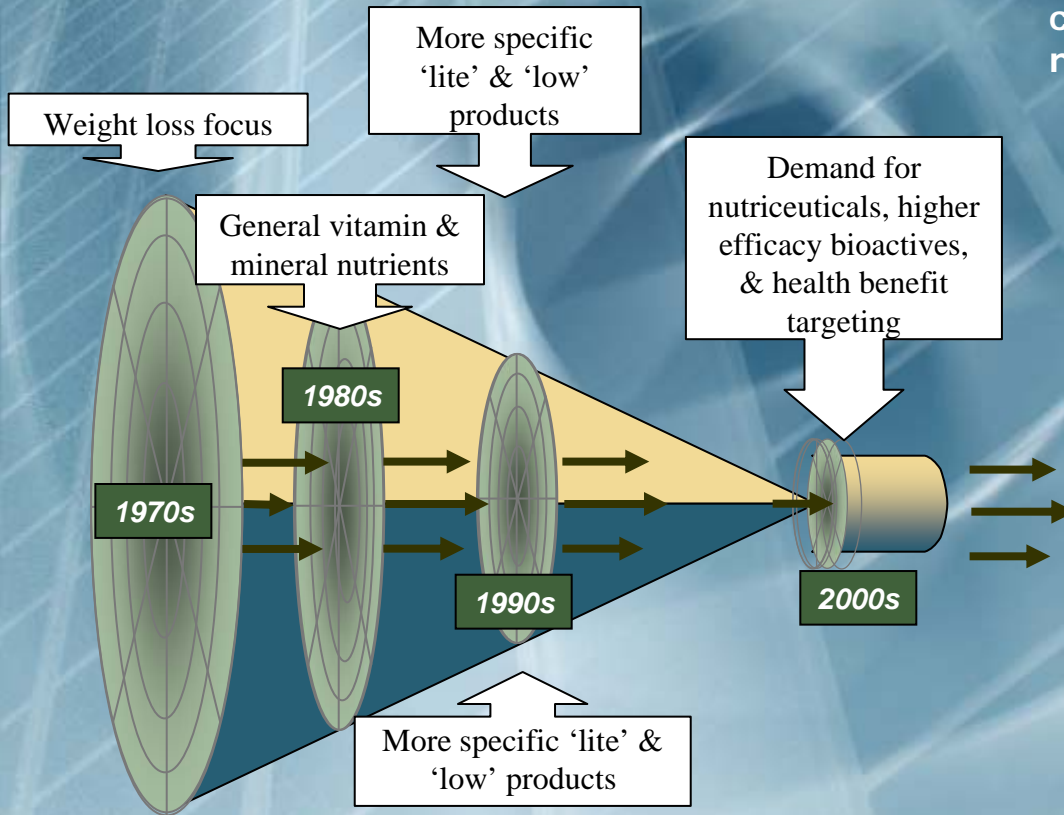
	1998	2003	2008	CAGR '98-'03	CAGR '03-'08
Functional Beverages	\$2.7B USD	\$5.1B USD	\$7.4B USD	13.2%	7.8%
% total functional market	14%	18%	19%		

- New product introductions are dominated by functional beverages
- The average person has 8-12 'drinking opportunities'/day as compared to 3-5 'eating opportunities'
- The consumer is more aggressive in sampling new beverages, including functional beverages – often tied to 'solo shopping'
- The expected growth of functional beverages compares favorably with that of traditional food (1-3%) and the overall functional market (~6%).

Looking at a very interesting premium submarket, 'ingestible beauty products' (food & beverage only) is expected to garner a CAGR ('03-'08) of close to 20% ...rising to a market of ~\$300M USD – eventhough it remains a very new concept to the marketplace.

An Educated Consumer Base Is Seeking More Targeted Nutrition Solutions

A Focusing Product Demand Trend (Datamonitor)



• This focusing product demand trend is supported by a 2005 HealthFocus survey of concepts & ingredient solutions that consumers are interested in learning more about

Functional Food & Beverage Concepts		Functional Food & Beverage Ingredients	
Immune boosting foods/bev.	75%	Energy	60%
Enhance health	72%	Omega 3	59%
Reduce risk of disease	70%	Prebiotics & Immune health	57%
Folic acid & heart health	67%	Probiotics & digestion	56%
Nutrient combinations for better absorption	67%		
Antioxidants	64%		
Nutrients for healthy skin	64%		
Digestive supplementation	64%		
Vitamins & Minerals	63%		

LHL Brand Concepts: Healthy Twist

LHL Has Developed A Range Of Brand Entities That Target Different Segments Of The Market



Healthy Twist™

- Mass oriented distribution
- Natural focus
- Marriage of trend flavors & focused active ingredients

Inu.

- Green tea based beverage
- Mass/Natural distribution
- Enhance benefits of green tea with other high profile actives



Nutrelle™

- Health & Beauty positioning
- Alternative distribution model
- Trace/essence flavor & color profile



Healthy Twist Is A Natural & Kosher Brand Providing A Line Focused Well Being Beverages



- Natural
- Kosher
- Made with Organic ingredients
- Mild essence flavor & color profile
- Highest quality active ingredients
- Broad line pairing market leading flavors with key health benefits
- Provide access to health benefits in a non-intimidating consumer-friendly fashion

Healthy Twist: Slim-Twist Brand Concept

HEALTHY
Twist™

Lemon Chamomile

SuperCitrimax
Weight Loss Ingredient

CHROMEMATE®

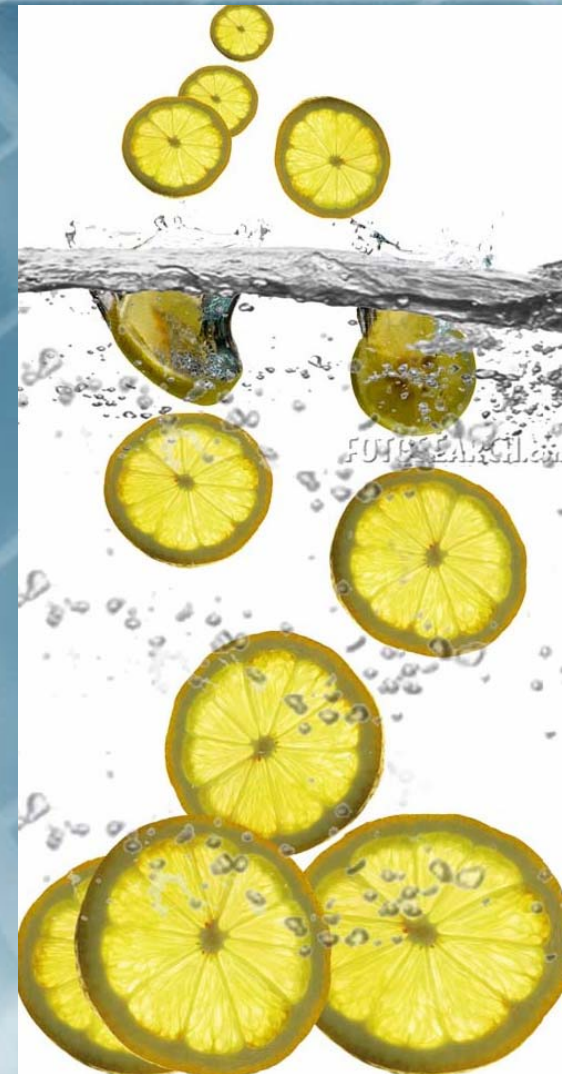
Psst, here's some disclosure -- if you have zero interest in bulge battling, portion control, or increasing lean body mass, you may want to try one of our other great tasting beverages -- unless of course, you are a big lemon chamomile fan...which we agree, tastes awesome. However, if you want to help your body to maintain its peak shape and in a healthy & satisfying way, make our Slim-Twist part of your day (along with a healthy diet & exercise)! The proprietary blend in Slim-Twist has been shown to:

- curb appetite*
- burn Fat*
- reduce body weight 3-times greater than diet & exercise alone*
- promote healthy serotonin levels*
- help maintain normal cholesterol levels*

Help your body out.

CHROMEMATE®

SuperCitrimax
Weight Loss Ingredient



Healthy Twist: Body Smart Brand Concept

HEALTHY
Twist™

Body Smart
Peach Mango

Help your body out. MEAL REPLACEMENT.

Looking great on the outside doesn't always lead to taking care of your insides! Sacrifice the pounds....but not the nutrition. Body Smart gives back the essential vitamins, minerals, & nutrients that your body is craving – while delivering a great taste for your own!

Ingredients: Dietary Fiber (as Fibersol 2) 500 mg, Vitamin A (as Palmitate) 1250 IU, Vitamin D3 (as Cholecalciferol) 100 IU, Vitamin E (as acetate, USP-FCC) 7.5 IU, Biotin (USP) 75 mcg, Folic Acid (USP-FCC) 0.1 mg, Niacin (as Niacinamide, USP) 5 mg, Pantothenic Acid (as D-Calcium Pantothenate, USP) 2.5 mg, Vitamin B1 (as Thiamin Mononitrate, USP-FCC) 0.375 mg, Vitamin B12 (as Cyanocobalamin, USP) 1.5 mcg, Vitamin B2 (as Riboflavin, USP-FCC) 0.425 mg, Vitamin B6 (as Pyridoxine HCl, USP) 0.5 mg, Vitamin K1 (as Phylloquinone) 20 mcg, Calcium (as Calcium Lactate, USP-FCC) 10 mg, Chromium (as Chromium Chloride (H₂O), USP) 30 mcg, Copper (as Copper Gluconate, USP) 0.5 mg, Iodine (as Potassium Iodide, USP-FCC) 37.5 mcg, Iron (as Ferrous Sulfate, Dried, USP) 4.5 mg, Selenium (as Sodium Selenite) 17.5 mcg, Zinc (as Zinc Sulfate, USP-FCC) 3.75 mg, DHA (as Microencapsulated Fish Oil) 4.2 mg EPA (as Microencapsulated Fish Oil) 0.8 mg, Lutein (as Lutein, 5%) 0.25 mg, Lycopene (as Lycopene 10%) 0.25 mg

All Natural flavors & colors
*Percent Daily Value based on a 2,000 calorie diet.
**Daily Value not established.

Fresh Healthy Stuff, LLC
Portsmouth, NH

www.FreshHealthyStuff.com



Lemon Cantaloupe

Supplement Facts

Serving Size: 1 cap (~1300mg)
Serving per container: 1

Amount Per Serving		% Daily Value*
Calories 0		
Total Fat	0g	N/A
Sodium	0mg	N/A
Total Carbohydrates	0.2g	<1%
Dietary Fiber (Fibersol-2™ soluble fiber)		200mg
Sugars		0g
Protein	0g	N/A

	mg/ serving	%RD I		mg/ Serving	%RD I	
Vitamin A (as Palmitate)	1250 IU	0.38	25%	Biotin (USP)	7.5	25%
Vitamin C (as Ascorbic Acid, USP-FCC)	42	70%	Pantothenic Acid (as D-Calcium Pantothenate, USP)	2.5	25%	
Vitamin D3 (as Cholecalciferol)	140 IU	0.0025	25%	Calcium (as Calcium Potassium Phosphate Citrate)	8.59	<2%
Vitamin E (as acetate, USP-FCC)	0.5IU	5	25%	Iron (Ferrous Sulfate, Dried, USP)	4.5	25%
Vitamin K1 (as Phyttonadione)	0.02	25%	Iodine (as Potassium iodide, USP-FCC)	.0375	25%	
Vitamin B1 (as Thiamin Mononitrate, USP-FCC)	.375	25%	Zinc (as Zinc Sulfate, Dried, USP)	3.75	25%	
Vitamin B2 (as Riboflavin, USP-FCC)	0.425	25%	Selenium (as Sodium Selenite)	0.0175	25%	
Niacin (as Niacinamide, USP)	5	25%	Copper (as Copper Gluconate, USP)	0.5	25%	
Vitamin B6 (as Pyridoxine HCl, USP)	0.5	25%	Chromium (as Chromium Chloride, USP)	0.030	25%	
Vitamin B12 (as Cyanocobalamin, USP)	0.0015	25%				
			AquaEssentials Antioxidant Blend	20.5	N/A	
			Aloe Vera (spray dried)			
			Citrus Bioflavonoid Complex			
			Grape Seed Extract			
			Green Tea Extract (90% polyphenols, >45% EGCG)			
			Lutein			
			Lycopene			

Other Ingredients: Fibersol 2, maltodextrin, citric acid, Natural Apple Flavor, Natural Pomegranate Flavor, Natural & Artificial Cranberry Flavor, FD&C Red #40, Sucralose, Acesulfame K

Lemon Cantaloupe (BRM)

Supplement Facts

Serving Size: 500ml
Serving per container: 1

Amount Per Serving

Calories 0

Total Fat 0g N/A

Sodium 0mg N/A

Sugars 0g

Protein 0g N/A

	Amount/ serving	%RDI
Vitamin B1 (as Thiamin Mononitrate, USP)	3mg	200%
Riboflavin (USP-FCC)	3.6mg	200%
Niacin (as Niacinamide, USP-FCC)	40mg	200%
Vitamin B6 (as Pyridoxine HCl, USP)	4mg	200%
Folic Acid (USP-FCC)	0.8mg	200%
Vitamin B12 (as Cyanocobalamin, USP)	6mcg	100%
Vitamin C (as Ascorbic Acid, USP-FCC)	300mg	500%

Other Ingredients: maltodextrin, citric acid, Natural Cantaloupe Flavor, FD&C Yellow #6, Sucralose, Acesulfame K, Natural Lemon Flavor

Lemonade (LEM)

Supplement Facts

Serving Size: 1 cap (~1300mg)
Serving per container: 1

Amount Per Serving

Calories 0

	% Daily Value*
Total Fat 0g	N/A
Sodium 0mg	N/A
Total Carbohydrates 0.2g Sugars 0g	N/A
Protein 0g	N/A

	amount/ serving	%RDI
D-Calcium Pantothenate (Vitamin B5)	10	100%
Vitamin E (as acetate)	6	30%
Thiamine Mononitrate (Vitamin B1)	1.5	100%
Riboflavin (Vitamin B2)	1.7	100%
Niacinamide (Vitamin B3)	20	100%
Vitamin B6 (as Pyridoxine HCl, USP)	2	100%
Vitamin B12 (as Cyanocobalamin, USP)	0.006	100%

Other Ingredients: maltodextrin, citric acid, Natural Lemonade Flavor, Sucralose, Beta Carotene Color, Aspartame, Silicon Dioxide

Mango Tea (MT or MAN) -- POWDER

Supplement Facts		
Serving Size: 1 cap (~1.3g)		
Serving per container: 1		
Amount Per Serving		
Calories 0		
Total Fat	0g	N/A
Sodium	0mg	N/A
Sugars	0g	
Protein	0g	N/A
	Amount/ serving	%RDI
Niacin (as Niacinamide, USP-FCC)	14mg	70%
Vitamin B6 (as Pyridoxine HCl, USP)	1.4mg	70%
Vitamin B12 (as Cyanocobalamin, USP)	2.1mcg	35%
Vitamin B5 (as D-Calcium Pantothenate (USP)	3.5mg	35%
	Amount/ serving	%RDI
Caffeine (Anhydrous USP)	75 mg	NA
D-Glucuronolactone	140 mg	NA
Taurine	525 mg	NA
Inositol	52.5mg	NA
Other Ingredients: water, Natural Tea Concentrate, maltodextrin, Natural and Artificial Mango Flavor, citric acid, Sucralose, Acesulfame K		

Mojito (MOJ)

Nutritional Facts

Serving Size: 1 cap (~1400mg)

Serving per container: 1

Amount Per Serving

Calories 0

	% Daily Value*
Total Carbohydrates 0g	N/A
Total Fat 0g	N/A
Sodium 0mg	N/A
Sugars 0g	
Protein 0g	N/A

Ingredients: Citric Acid, Malic Acid, Natural and Artificial Flavors, Erythritol, Lime Juice Concentrate, Ascorbic Acid, Lactic Acid, Aspartame, Acesulfame Potassium, FD&C Yellow No. 5, FD&C Blue No. 1, Tricalcium Phosphate

Other Formulations

- Immunity (Orange Flavor)

Aides in the prevention of illness

Vitamin C 250% RDI

Vitamin A 10% RDI

Vitamin E 10% RDI

Vitamin B3 250% RDI

Vitamin B5 250% RDI

Vitamin B6 250% RDI

Vitamin B12 250% RDI

Zinc 50% RDI

Chromium 25% RDI

- Antioxidant (Berry/Grape Flavor)

A daily dose of anti-oxidants with potent tea extracts in a great tasting berry flavor.

Tea Catechins 77 mg

Polyphenols 78 mg

EGCG 42 mg

Co-Enzyme Q10 15 mg

Bilberry Extract 100 mg



***FOR FURTHER QUESTIONS,
PLEASE CONTACT:***

Ron Foster
CEO
6420 S. GENERAL BRUCE DRIVE
TEMPLE, TX 76502
OFFICE: (254) 933-8470
FAX: (254) 933-8471
E-MAIL: ronfoster@ktcok.com

Phil Marley
VP Government Sales
6420 S. GENERAL BRUCE DRIVE
TEMPLE, TX 76502
OFFICE:(254) 933-8470
FAX: (254) 933-8471
E-MAIL: philmarley@ktcok.com